

NZ Rogaine Champs 2008

TAUPO 24/25 MAY 2008

Newsletter #3 - April 2008

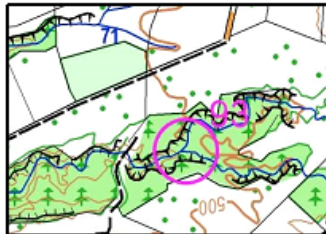
Sent your entry in yet??
Congratulations to first entry
in of Emma & Guy D'Lacy
of Christchurch.



The 2008 Rogaine Champs
are going to be a stunning
event gauging by the num-
ber of entries todate and re-
ports in from the planner.
*"I know we've picked some
of New Zealand's most sce-
nic landscape combined
with navigationally chal-
lenging territory in the
heart of the North Island.
Competitors are going to be
really challenged"* says
planner Lance Eccles.

A total of 4000 Points are
spread over 65 controls, the
furthest 8 kilometres from
the event centre.

The full championship
event is a 24 hour event.
The 12 hour event is split
Midday to 6pm, then 12
hours to stack a few Z's
then back from 6am to
Midday Sunday for the sec-
ond serving. This is a
strong alternative for those
not quite up to the full 24
hours.



HASH HOUSE - Speak-
ing of food, the Hash
house is a large, heated
Marquee, alnrite lighting,
along with seating and
tables for all. Overnight
food will be hot and
plentiful, whilst the af-
ter match meal will quell
even the biggest appetites.



ENTRY CLOSING - The
organisers recognise the need
to give maximum opportu-
nity for entry. So entries will
remain open until Monday of
the week of the event - that's
the 19th May.

Entry forms can be found at
www.cdorienteing.co.nz or
email the planner below.



Visit www.cdorienteing.co.nz or
contact ecfam@xtra.co.nz