

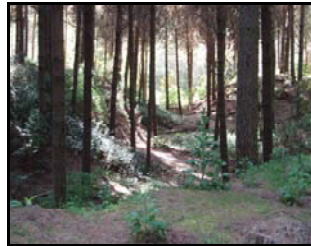
NZ Rogaine Champs 2008

TAUPO 24/25 MAY 2008

Newsletter #1

The Central North Island is home to the 2008 Rogaine championships, hosted jointly by Rotorua and Taupo orienteering clubs.

THE MAP – Based on standard NZ Topo Map with ocad overlay of fine detail. Scale will most likely be 1:45000 with several insert areas at 1:15000. The course area is approx 160 square kilometers. You'll travel through intricate Pine and Native forest, open heavily dissected farm land with even the potential for a smidgin of "urban"



PLANNING – The planning and controlling team is Lance Eccles and Mark Copeland both experienced orienteers multisporters and rogainers. Control site locations will generally be of "Orange" difficulty, placed to provide maximum route choice options. This map area is generally not overly physically demanding but is very diverse and will require strong navigation and route choice skills.

EVENT CENTRE – The nearest large town to the event Centre will be Taupo. This is where all accommo-

dation requirements should be directed. The event centre will include a large marquee capable of housing all participants, will be the "hash house" and will be heated if it's cold. Given it's late May daytime temperatures could be 10-18 degrees, night-time could drop as low as zero. Camping will be available with sufficient toilets for all. Campers will need to be self sufficient for water and all other needs.

ENTRY FORM – Event details, grades and entry form will be available in the new year.



Visit www.cdorienteering.co.nz or
contact ecfam@xtra.co.nz