

# Trentham

Rogaining map Upper Hutt, New Zealand

SCALE 1:12,000

0 100 200 300 400 500m

Contours 10m

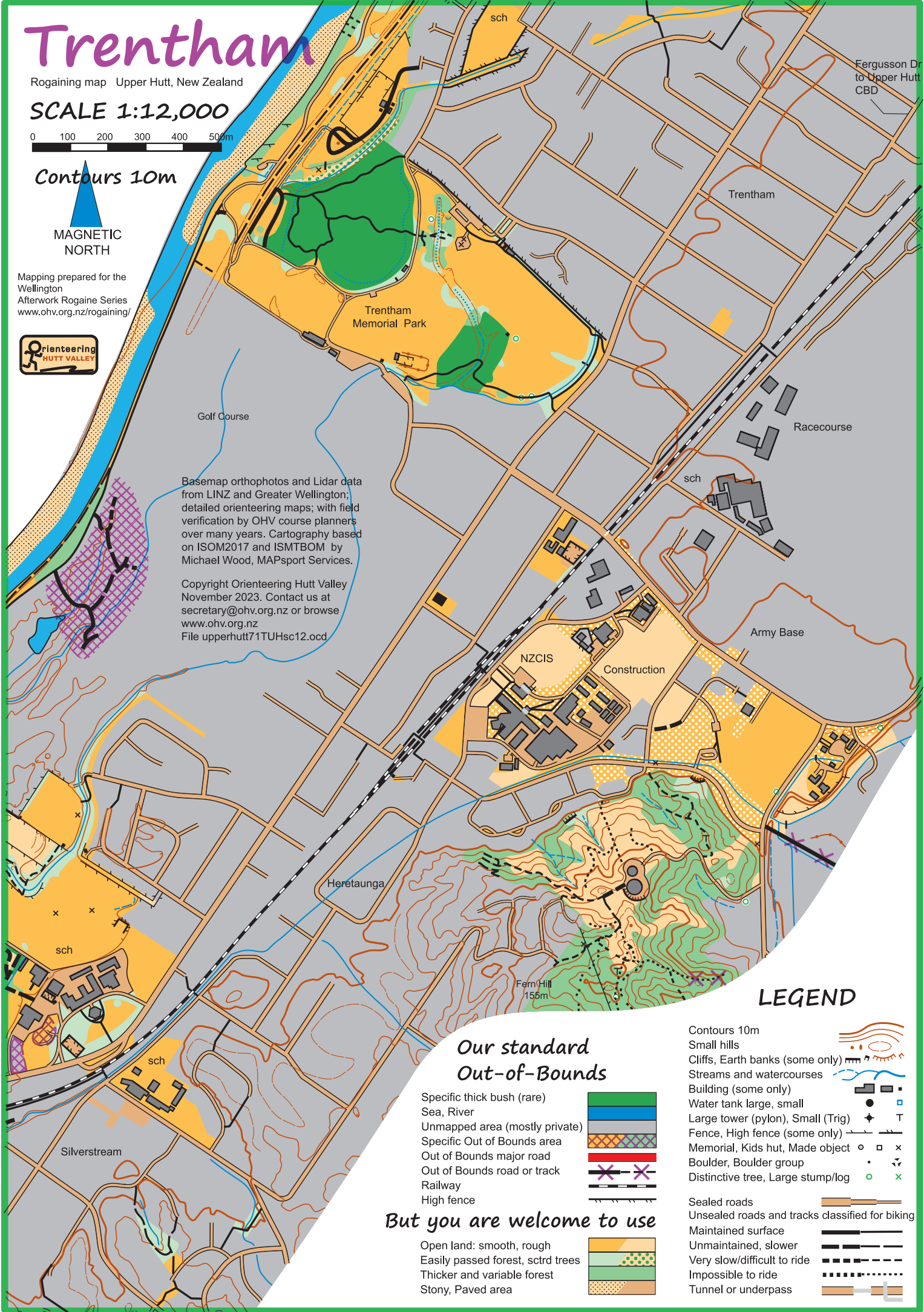
MAGNETIC NORTH

Mapping prepared for the Wellington Afterwork Rogaine Series [www.ohv.org.nz/rogaining/](http://www.ohv.org.nz/rogaining/)



Basemap orthophotos and Lidar data from LINZ and Greater Wellington; detailed orienteering maps; with field verification by OHV course planners over many years. Cartography based on ISOM2017 and ISMTBOM by Michael Wood, MAPsport Services.

Copyright Orienteering Hutt Valley November 2023. Contact us at [secretary@ohv.org.nz](mailto:secretary@ohv.org.nz) or browse [www.ohv.org.nz](http://www.ohv.org.nz) File upperhutt71TUHsc12.ocd



## LEGEND

### Our standard Out-of-Bounds

- Specific thick bush (rare)
- Sea, River
- Unmapped area (mostly private)
- Specific Out of Bounds area
- Out of Bounds major road
- Out of Bounds road or track
- Railway
- High fence

### But you are welcome to use

- Open land: smooth, rough
- Easily passed forest, scdrd trees
- Thicker and variable forest
- Stony, Paved area

- Contours 10m
- Small hills
- Cliffs, Earth banks (some only)
- Streams and watercourses
- Building (some only)
- Water tank large, small
- Large tower (pylon), Small (Trig)
- Fence, High fence (some only)
- Memorial, Kids hut, Made object
- Boulder, Boulder group
- Distinctive tree, Large stump/log
- Sealed roads
- Unsealed roads and tracks classified for biking
- Maintained surface
- Unmaintained, slower
- Very slow/difficult to ride
- Impossible to ride
- Tunnel or underpass